

JACOB & CO. x BINGHATTI

# BURJ BINGHATTI JACOB & CO RESIDENCES

---

An ultra-luxury branded residential tower in Business Bay, Dubai.

Project Presentation | May 2026



# Executive Snapshot

A record-focused luxury residence where horology, jewellery and real estate become one design narrative.

Collaboration between Jacob & Co. and Binghatti, combining high-end horology, fine jewellery and real estate development.  
Positioned as Dubai's tallest residential tower and an iconic branded address in Business Bay.  
Residential portfolio includes exclusive villas, sky mansions and sky penthouses.

595m

Listed height

CVU data, subject to change

105

Floors

Above ground

2027

Expected completion

CVU listing

## Location

Business Bay, Dubai - close to Downtown Dubai, DIFC and Dubai Canal.

## Project Type

Residential skyscraper with branded luxury residences and private lifestyle services.

## Positioning

A collector-grade living concept: the residence is framed as a rare object, not only an address.



# The Partnership

Excellence meets innovation.

## Jacob & Co.

Internationally recognized for exceptional jewellery, timepieces and ambitious design codes. The project translates its craftsmanship into spatial luxury.

## Binghatti

Dubai-based developer bringing architectural execution, branded real estate experience and skyline scale.

### Shared ambition:

to transform high-rise living into a branded luxury object - detailed, rare and emotionally memorable.

# Architectural Concept

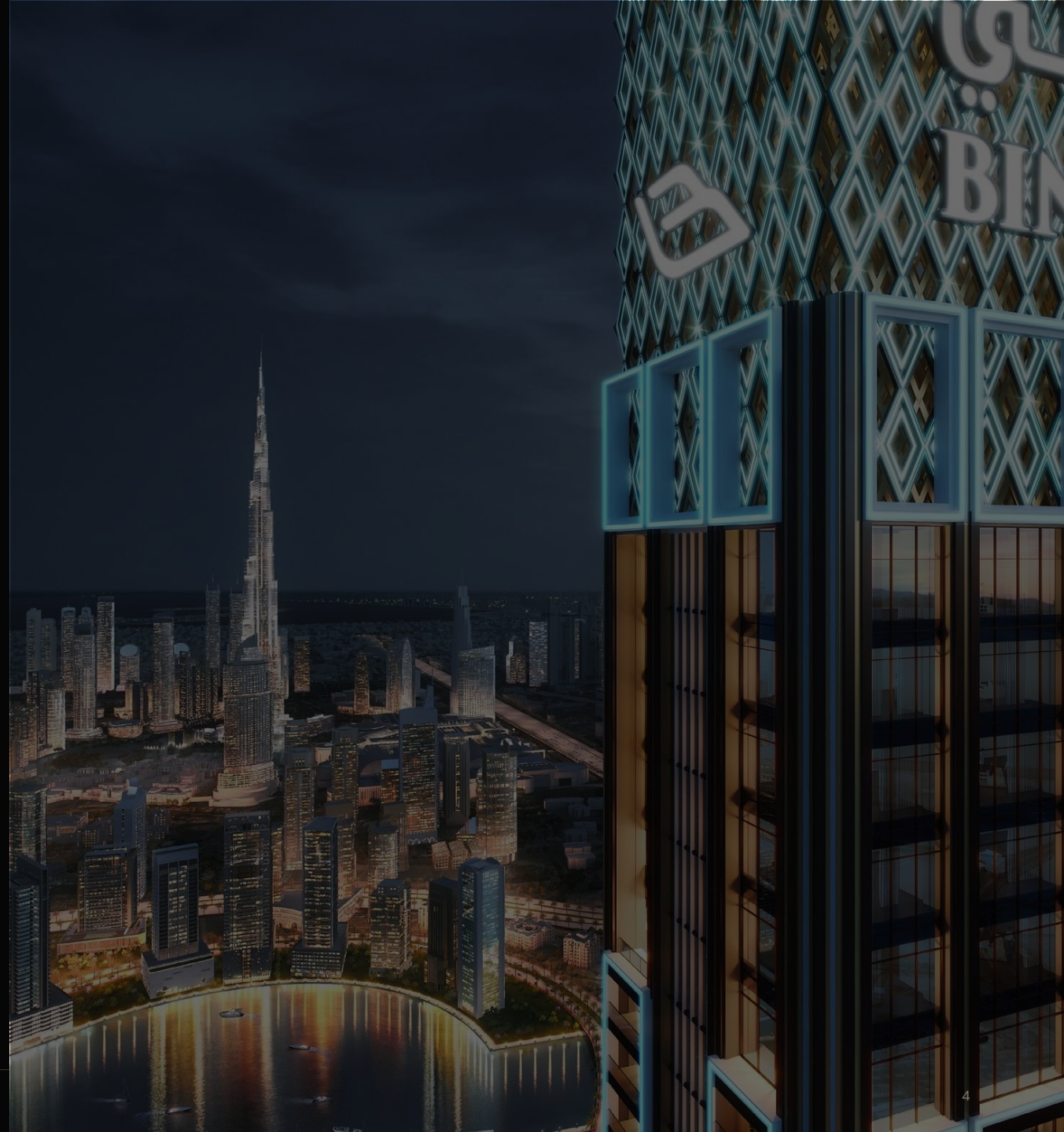
---

A tower crown inspired by Jacob-cut gems.

A diamond-like lattice crown forms the project's most recognizable skyline gesture.  
The vertical silhouette translates jewellery precision into architectural scale.  
The tower is designed as a landmark - luminous, sculptural and instantly identifiable.

## Design cue

The apex is described as a crown inspired by Jacob-cut gems with an intricate lattice framework.



# Location: Business Bay

A luxury address anchored between business, culture and waterfront lifestyle.

Business Bay, Dubai - a strategic urban location near the city's core.  
Convenient access to Downtown Dubai, DIFC and Dubai Canal.  
A skyline and waterfront context that reinforces the tower's trophy address appeal.

BURJ  
KHALIFA

SHEIKH ZAYED  
ROAD

DOWNTOWN  
DUBAI

BUSINESS BAY  
MARINA

DOWNTOWN DUBAI

DIFC

DUBAI CANAL

BINGHATTI

# The Residences Collection

A branded portfolio built around rarity, scale and private luxury.

## Villas

Sapphire Villa  
Emerald Villa  
Ruby Villa

## Sky Mansions

Diamond Sky Mansion  
Fleurs de Jardin Sky Mansion

## Sky Penthouses

Astronomia Sky Penthouse  
The Billionaire Sky  
Penthouse



The official project facts identify the tower as a residential skyscraper with exclusive villas, sky mansions and sky penthouses.

# Interior Design Language

Jewellery-inspired tactility, rich material contrasts and panoramic views.

## VELVET FABRIC

Royal blue, sapphire blue, dusky blue accents

## STONE & MARBLE

Nero Marquina, Calacatta, Asian St. Laurent, Black River marble

## GLASS & METAL

Mirror glass, tinted violet/brown glass, brass metal glossy, stainless matte

## TACTILE DETAILS

Fluted panels, scalloped textures, snake-skin texture and polished surfaces

# Signature Amenities & Services

---

The project pairs private residences with hospitality-led lifestyle support.

01 Lobby Lounge

02 Infinity Pool

03 Spa Service

04 Gym & Training

05 Concierge

06 Butler Service

07 Private Chef

08 Chauffeur

09 Housekeeping

10 Daycare / Bodyguard



# Availability & Commercial Snapshot

Current public listing data from Binghatti property search.

Unit Type	Starting Price	Starting Area	Note
Two Bedrooms	AED 8,400,000	3,214 sq ft	Golden Visa
Three Bedrooms	AED 13,200,000	2,262 sq ft	Golden Visa
Four Bedrooms	AED 17,000,000	4,229 sq ft	Golden Visa

Note: pricing, areas, visa status and availability are public listing data and must be verified with Binghatti before any commercial use.



# Why It Stands Out

A project built around scarcity, storytelling and skyline presence.

## 01 Collectible branded real estate

The residence is positioned like a rare luxury object - designed, named and experienced through Jacob & Co codes.

## 02 World-record ambition

The tower is designed to set a new benchmark for residential vertical living in Dubai.

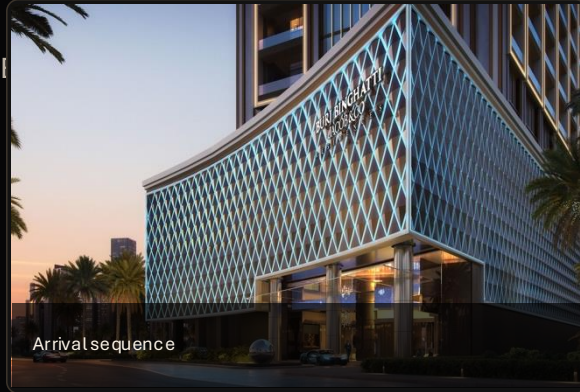
## 03 A strong visual identity

A luminous crown, gem-like geometry and a recognizable façade strengthen recall and prestige.

## 04 Ultra-luxury service layer

Amenities and à la carte services elevate the property beyond a conventional high-rise residence.

# Visual Experience



Arrival sequence



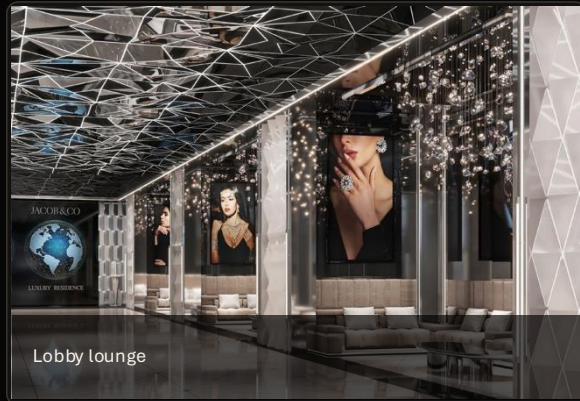
Sky living area



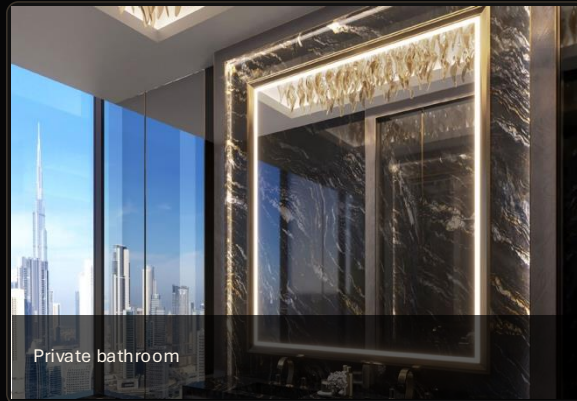
Jewel crown



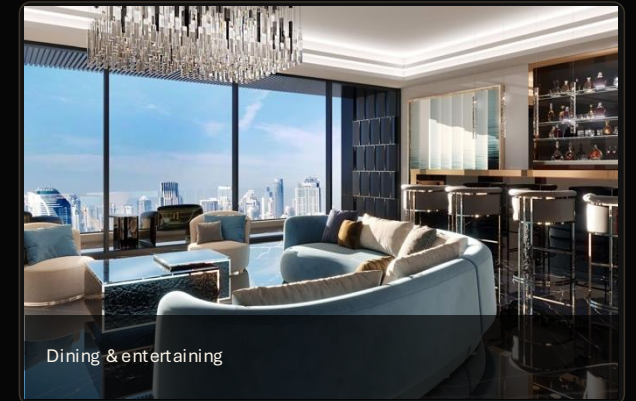
Private pool



Lobby lounge



Private bathroom



Dining & entertaining

# Sources & Disclaimer

Prepared from publicly available official project materials and third-party tall-building data.

01	<b>Official project page</b>	<a href="https://www.binghatti.com/en/branded-projects/burj-binghatti-jacob-co-residences">https://www.binghatti.com/en/branded-projects/burj-binghatti-jacob-co-residences</a>
02	<b>Official project assets page</b>	<a href="https://www.binghatti.com/en/property-assets/burj-binghatti-jacob-co-residences">https://www.binghatti.com/en/property-assets/burj-binghatti-jacob-co-residences</a>
03	<b>Project facts PDF + brochure</b>	Binghatti public project asset files, accessed May 2026
04	<b>Property search / price snapshot</b>	<a href="https://www.binghatti.com/en/property-search/business-bay/burj-binghatti-jacob-and-co-residences">https://www.binghatti.com/en/property-search/business-bay/burj-binghatti-jacob-and-co-residences</a>
05	<b>CVU / Skyscraper Center listing</b>	<a href="https://www.skyscrapercenter.com/building/burj-binghatti-jacob-co-residences/45196">https://www.skyscrapercenter.com/building/burj-binghatti-jacob-co-residences/45196</a>
06	<b>Jacob &amp; Co project link</b>	<a href="https://jacobandco.com/real-estate/binghatti">https://jacobandco.com/real-estate/binghatti</a>

Disclaimer: All project details, availability, pricing, dimensions, delivery dates, height/floor data and visual representations are subject to change and must be verified directly with Binghatti / Jacob & Co before commercial or investment decisions. This deck is a presentation summary and not financial advice.